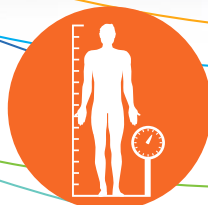
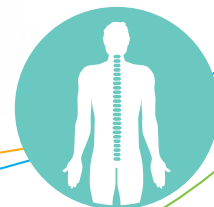
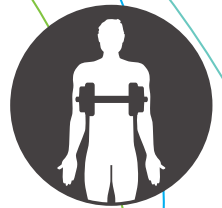
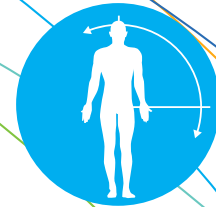
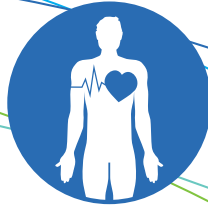


mobee 360



**The leading platform for digital assessments
in prevention, therapy and sports.**



- + Modular theme structure
- + Intuitive operation
- + Comprehensible presentations
- + Numerous interfaces



Sports & Fitness



Companies & Institutions



Therapy & Medicine

Digital Assessments for Health Professionals

The **mobee 360** platform includes everything that trainers, therapists, physicians and occupational health management service providers need for modern, customer-oriented assessments. The various subject areas can be integrated as modules into the platform and allow comprehensive evaluations - for a **preventive or therapeutic "panorama"**. All systems are modern, intuitive in use and easy to learn. Particular importance is attached to the **effective communication of the results** to the customer or patient. Among other things, appealing visualizations and consumer-friendly texts serve this purpose. Thanks to **numerous interfaces** (e.g. HL7, Thedex, medo.check, ...), there are also extensive exchange possibilities with third-party systems.

Product Overview

Visualization of muscular mobility deficits.

Modern acquisition of the Range of Motion.

Body composition and body data.

Spine analysis as a basis for targeted back measures.

Analysis of strength capacity and strength balance.

Stress analysis for a success-oriented stress management.